



PEW Electrical
Distributors

Roller Guides



Car & Counterweight Roller Guides

delivering performance, ride quality and exceptional value

MAIN FEATURES

- Wide range of rail sizes & applications
- Quick & easy installation
- Low noise & vibration
- Durable, engineered design
- Control of car float



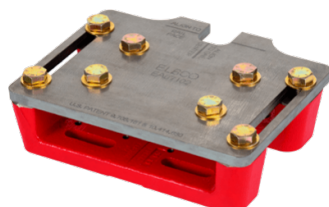
MODEL A - The industry's gold standard for elevator ride quality for over 70 years



CALIBRE C-150 - Combining ease of installation and hoistway adjustability, accommodating rails from 9 to 19mm



Swivel Slide Guides - ELSCO's unique slide guides with spring suspension and adjustable stops



FLEX-MOUNT™

- Eliminate time wasted measuring-up for custom adapter plates
- Engineered adapter plate solution designed and tested to comply with EN81 (when installed correctly)
- Reduce labour costs through quicker roller guide installation

Roller Guide Rail Compatibility

Each model features a compatibility chart to confirm the right product code for your application.

PART #	RAIL SIZES												
	ISO ASME	T65	T70	T75	T78	T82	T89	T90	T114	T125	T127-1	T127-2	T140-1
	WIDTH (mm)	7.9	9.0	10	10	5.75#	8#	16	16	16	16	16	18#
	WIDTH (in)	0.311	0.354	0.394	0.394	0.354	5/8	5/8	5/8	5/8	5/8	5/8	3/4
EG21009						•							
EG21010				•	•								
EG21016							•	•	•	•	•	•	
EG21019													•

PEW Electrical Distributors Ltd

Unit 1 The iO Centre
59-71 River Road
Barking, Essex IG11 0DR

0208 507 1001

sales@pewelectrical.com
www.pewelectrical.com

